



# Our Impact

Delivering long-term, measurable value to communities across our global portfolio

Community Investment Report 2025



## Table of Contents

1. Executive summary
2. How we work
3. Impact in numbers
4. Stories and outlook





1. EXECUTIVE SUMMARY

**Delivering long-term  
value to communities  
across our global  
portfolio**

**Scatec**



## EXECUTIVE SUMMARY

## Community investments help Scatec build trust, reduce risks and create lasting local value

Scatec has built a global portfolio of programmes that create long-term value in the communities near our sites. These figures show the scale of our commitment to date – and the impact we continue to build across our markets.

# 705

programmes  
implemented



# 23.6

m USD invested  
in communities



# 797

thousand people  
reached



# 70%

long-term  
investments



# 150

education  
programmes





## EXECUTIVE SUMMARY

# Toward higher-return, long-term programmes

### Why it matters

Local development programmes help Scatec maintain our social license to operate, strengthen stakeholder relations and support predictable project operations.

### What changed in 2025

The portfolio shifted further towards long-term programmes, early phase mapping, stronger partnerships, and data-driven monitoring and evaluation.

### Why are we publishing this report now?

As our portfolio continues to grow, so does the importance of communicating our impact more clearly. The 2025 report does not capture everything we do, but it offers a snapshot of the year that passed, bringing together selected stories from across our markets.



## 2. HOW WE WORK

**A flexible global  
framework, anchored  
in local ownership**



HOW WE WORK

# Strong local teams backed by specialised E&S resources



Corporate & Regional E&S Resources



Community Liaison Officers (CLOs)



## HOW WE WORK

# A Scatec community investment follows global principles while being tailored to local needs and stakeholder concerns

### What are community investments?

Initiatives that contribute to the long-term common good of the local communities closest to our sites and come in addition to efforts made to mitigate or compensate for project-related impacts.

### How we work

We implement local development programmes in line with our Community Investment Procedure. Anchored in the Code of Conduct, the procedure outlines the principles of conduct and how to operate.

### Objectives and goals

- Ensure social license to operate
- Mitigate social risks to the project
- Be a catalyst for sustainable local value creation
- Achieve measurable impact

### Guiding principles

Community needs-based, transparent, proportionate to project risks and impacts, monitored quarterly, and designed with sustainable exit and handover strategies.

We avoid creating dependencies on our funding and encourage self-reliance.





## HOW WE WORK

# Impactful investments are not about spending more, but ensuring that spend is meaningful, measurable and impactful

We ensure long-term value creation through early phase mapping to build trust with the communities near our sites, a return on investment philosophy, and strong monitoring and evaluation – using data to drive decisions.

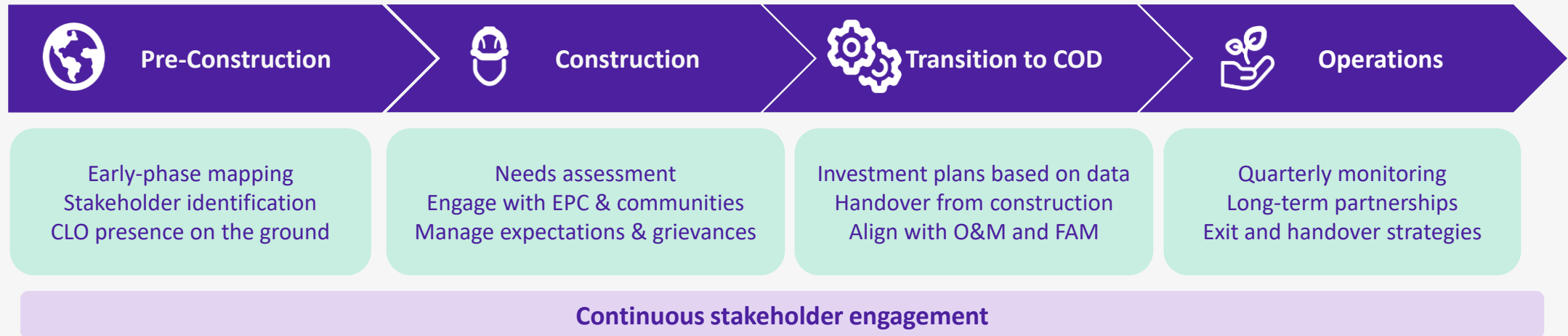




## HOW WE WORK

# Early phase mapping mitigates risks, ensures predictable operations and helps create local value

Mapping and social baselines build the trust and evidence-base needed for investment decisions later in the project. Last year, we conducted **8 in-depth community needs assessments** in four countries, guiding our investments.



### 3. IMPACT IN NUMBERS

# Return on investment in the global portfolio



## IMPACT IN NUMBERS

In 2025, we implemented over 50 new programmes and increased our share of long-term funding from 70% in previous years to 95%

120

ongoing  
programmes



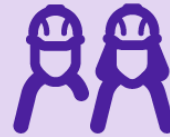
2.4

m **USD** invested  
in new projects



8

global markets  
engaged



95%

long-term  
investments



30+

education  
programmes





**100,000+**

people reached  
in 2025

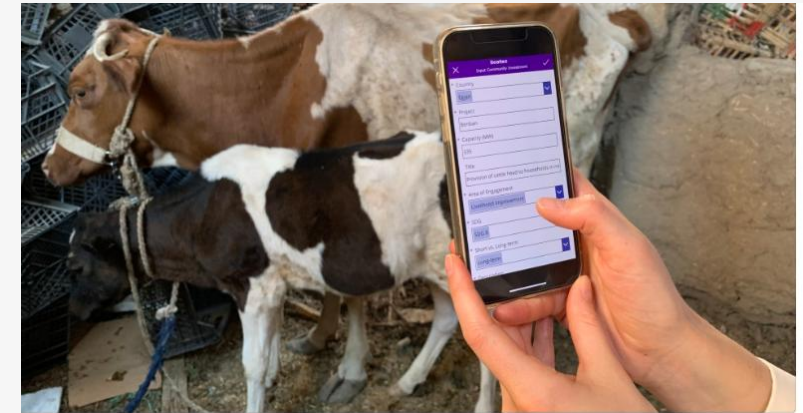
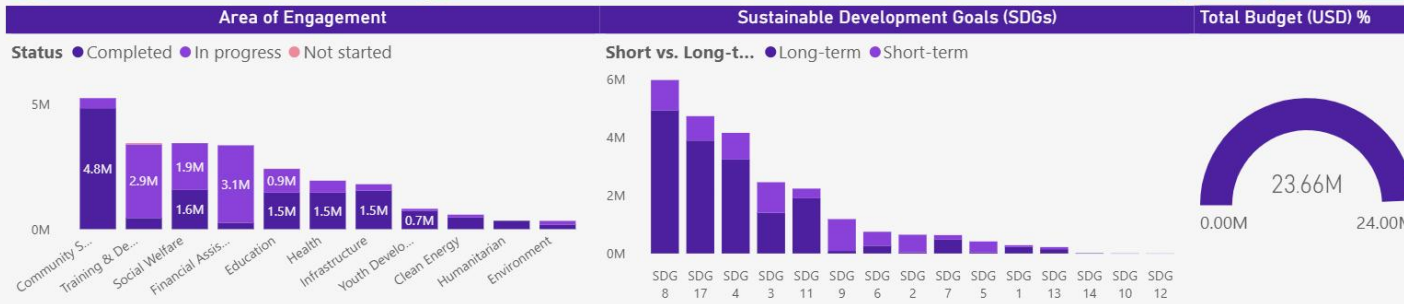




IMPACT IN NUMBERS

# Spend is increasingly managed through data and dashboards

Data is aggregated and gathered globally on SharePoint and Power BI to enable us to use data to drive good decisions. In 2025, we strengthened data tools, real-time capture and indicators to enable better monitoring and evaluation practices.



Country, Project, Title

- Select all
- Argentina
- Brazil
- Czech Republic
- Egypt
  - Benban
    - Contribution of Scatec shar...
    - Provision of cattle to house...
    - Provision of medical aid an...
  - Honduras
  - Jordan
  - Malaysia
  - Mozambique
  - Rwanda
  - South Africa
  - Vietnam

Short vs. Long-term: Long term | Status: In progress

150K	150
Programme Budget (USD)	Number of Households Reached
96	1300
% Households generating income	Expected annual income (USD)

**Programme Name**  
Provision of cattle to households in need

**Programme Description**  
In collaboration with the Solidarity Affairs Authority, Orman Association and local NGOs, 150 households in need were selected. The focus was on (1) local communities, (2) prioritising those that are female-headed. Each household was provided one pregnant cow. Most of the cows gave birth to calves in the first 6 months from project start. Several are pregnant again.

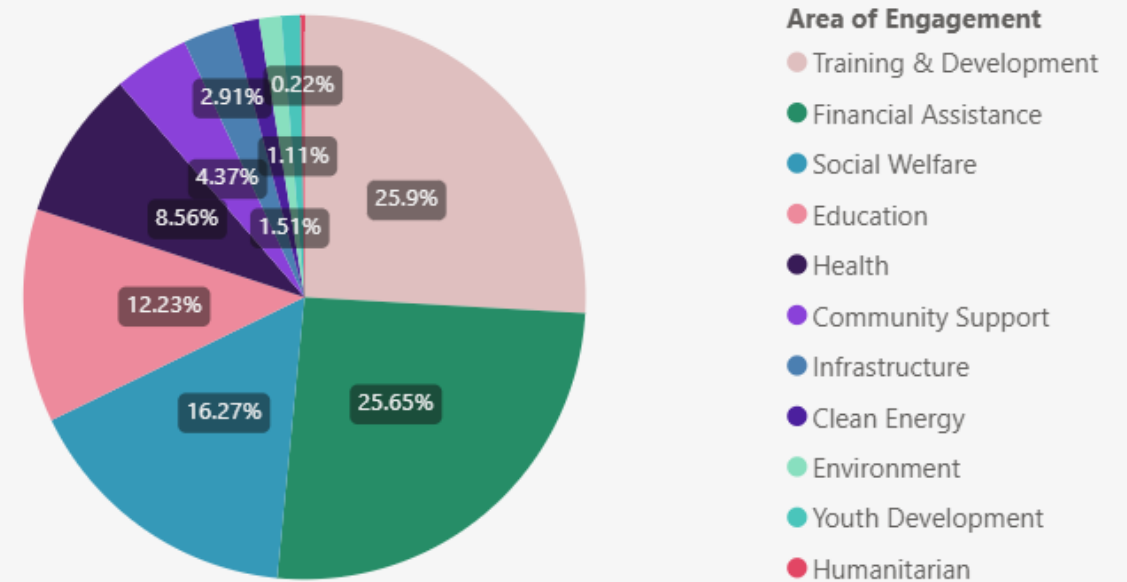
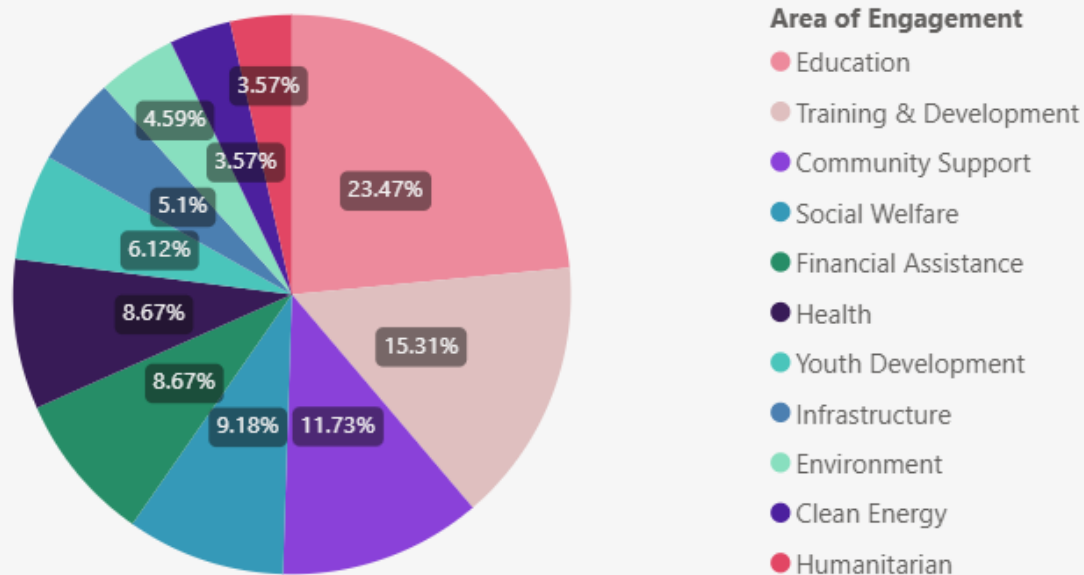
The programme was previously successfully implemented by Orman Association to thousands of households in need across Egypt. The households are provided animal fodder and medical support for the cattle and calves until they start to generate sustainable income. Sustainable income is acquired through sale of milk, dairy products and potentially calves according to the household decision to raise or sell the calves. The budget for the project was



## IMPACT IN NUMBERS

# We invest where it matters most, depending on local needs

In 2025, we invested more in Training & Development, Financial Assistance and Social Welfare programmes compared with previous years. Investments in Education still represent the highest share in terms of number of programmes.





## IMPACT IN NUMBERS

# We continue to invest in community PV projects, expanding the benefits of clean energy to the people living closest to our sites

Clean Energy Projects	Programme Spend (USD)	Country	Area of Engagement
2020.05 Kindergarten Refurbishment Programme	67,300	Brazil	Clean Energy
Donation to Solar Lamps for Playa Grande	2,620	Honduras	Clean Energy
Drilling of water well and installation of solar system for water pump in Agua Fría	52,884	Honduras	Clean Energy
Drilling of water well and installation of solar system for water pump in El Obraje	46,657	Honduras	Clean Energy
Home solar systems	12,050	Honduras	Clean Energy
Installation of solar system for existing wells in Rancheria	15,254	Honduras	Clean Energy
Lighting with solar lamps at public places at communities	2,320	Honduras	Clean Energy
Maintenance of solar systems	1,791	Honduras	Clean Energy
Nagarejo installation of community solar PV for water pumping	14,600	Honduras	Clean Energy
Solar Lamps for Illumination Agua Fria	1,607	Honduras	Clean Energy
Solar energy provision for community hall (Dr. Bashar Hall & wadi al bastas association)	14,859	Jordan	Clean Energy
Solar energy provision for local schools combined with schools renovations and heating system, energy saving lighting	189,000	Jordan	Clean Energy
Solar energy provision for Youth Club	3,264	Jordan	Clean Energy
Solar PV projects in Rwanda	37,000	Rwanda	Clean Energy
Energy Drive	23,695	South Africa	Clean Energy
School Cleaner Initiative Program	39,005	South Africa	Clean Energy
PV station for the town fire department	20,000	Ukraine	Clean Energy
PV station for backup power supply to the well in the village	35,000	Ukraine	Clean Energy
PV station for the town water utility	48	Ukraine	Clean Energy
PV station for the town water utility	20,000	Ukraine	Clean Energy
PV station for the town water utility	25	Ukraine	Clean Energy
PV station with batteries for the town water utility	46,260	Ukraine	Clean Energy
<b>Total</b>	<b>645,239</b>		



#### 4. STORIES AND OUTLOOK

**Local needs.  
Measurable outcomes.**



## CASE STUDY: BRAZIL

# Access to play and community ownership in Apodi

### Access to play

For the past four years, Scatec, NGO love.futebol and the Bom Sucesso community have used sport, culture and education to create a lasting social legacy in the community neighbouring our site.

### Community ownership

140 local volunteers, including more than 30 Scatec employees, contributed to the renovation of sports and cultural spaces in the community – together donating over 2,000 hours of work.

### Platform for growth

Since 2022, the programme has brought these spaces to life. Every week, around 48 children and young people participate in sports and cultural activities, contributing to increased well-being and self-confidence.





## Key results in 2025

**94%**

average level of participation



**48**

participants,  
< 10% drop-outs



**93%**

participants reporting higher self-esteem





## CASE STUDY: BOTSWANA

# Increasing employability, entrepreneurship and digital access

### The challenge

A community needs assessment in Selebi Phikwe, Mmadinare and Mapakata identified a need for education and skills training, particularly amongst women and youth, as well as GBVH and HIV/AIDS awareness in the communities.

### How we worked

Scatec partnered with NGO Humana People to People to implement a skills development programme, as well as GROW groups to increase women's economic empowerment.

### Driving socio-economic outcomes

Active programme areas include digital skills development, business and entrepreneurship training, GROW empowerment groups and GBVH & HIV/AIDS awareness campaigns. The programme is designed to be sustainable through ongoing training and support, market linkages and capacity building strategies.



## Key results in 2025

**971**

number of  
people reached



**103**

graduates across  
all training  
programmes



**529**

engaged in GBVH  
& HIV awareness  
sessions



**82**

computer studies  
and business  
training graduates





## CASE STUDY: PAKISTAN

# Income generation and climate-smart farming for vulnerable communities

### The challenge

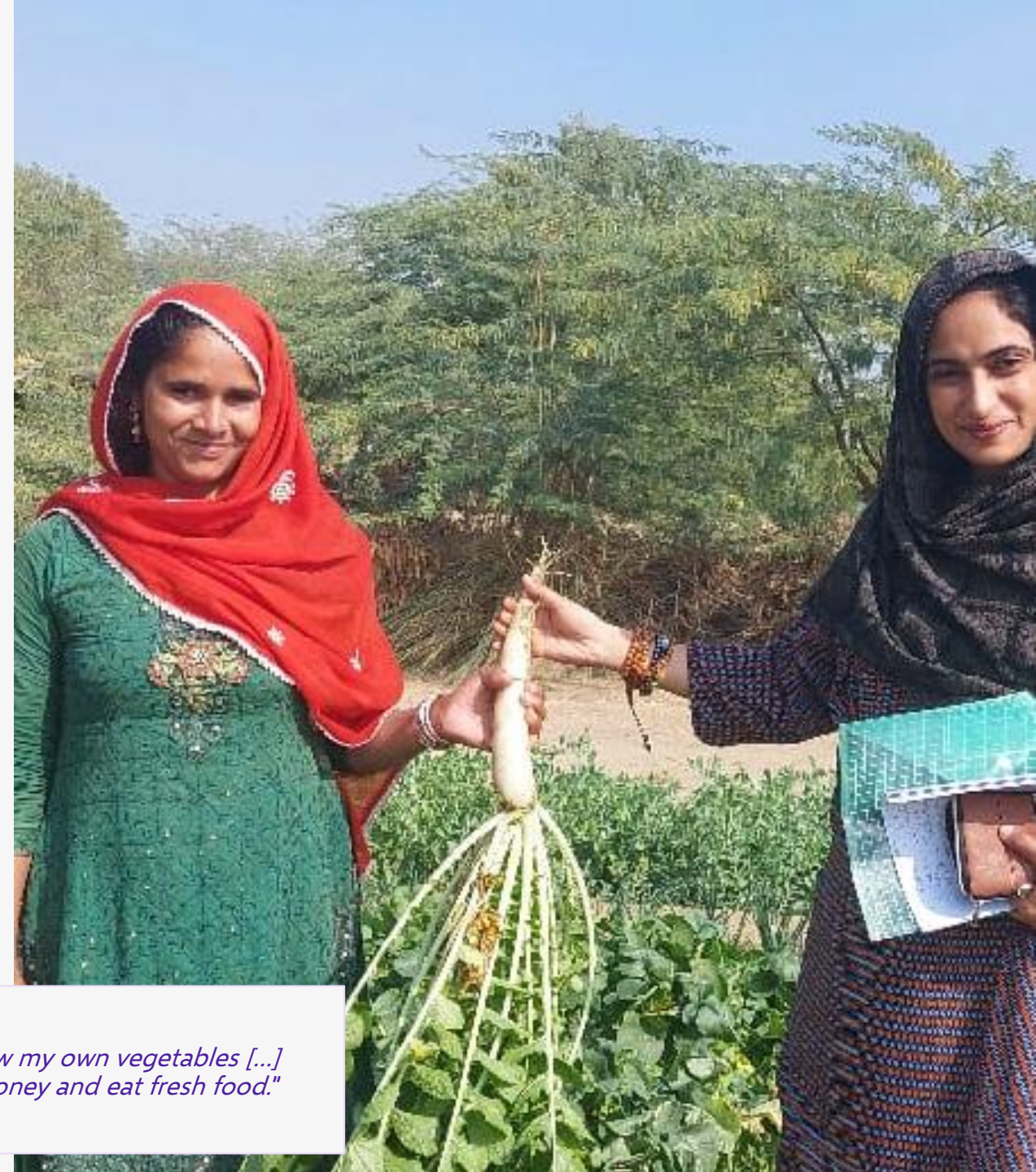
Low motivation, limited skills and barriers to women's participation – combined with poor socio-economic conditions affecting overall development.

### How we worked

The programme combines agricultural training, toolkits and gender inclusion to build sustainable resilience in the communities living closest to our sites. We partnered with NGO MERF to implement the programme.

### Long-term community-owned development

Resilience increased through diversification, integrated livestock, poultry, kitchen gardening and off-farm income generation trainings. Community livelihood sources increased and female groups formed for the first time.



### Testimonial

A female community member shared, *"I never thought I could grow my own vegetables [...] Now I have my own kitchen garden, and it helps my family save money and eat fresh food."*



## Key results in 2025

**55**

farmers trained  
in climate smart  
practices



**50**

people trained in  
livestock  
management



**110**

women trained in  
kitchen  
gardening



**50**

male farmers  
receiving seeds  
and fertilizers





## CASE STUDY: UKRAINE

# Community PV projects ensuring access to clean and reliable energy

### Ukraine overview

Despite the ongoing war, Scatec implemented **38** programmes in 2025, investing over **220,000** euros and reaching more than **74,000** people. We invested in **3** community PV projects, securing energy independence and uninterrupted water supply during the war.

### PV station for fire department

8MW PV station with a 20kWh battery system to help the fire department maintain critical operations during blackouts. The department prepared the roof, while Scatec handled technical review, design, installation, and commissioning. The project cost was €20,000.

### Hybrid PV and battery system for water utilities

An 80kW hybrid PV plant and 40kW battery system was installed with support from NGO Eco Club. Scatec financed €39,360 of the PV station and €6,900 of the batteries, while the community contributed €17,450 and €6,000, respectively.

### PV station for water treatment plant

A 75kW PV station, adding to a 60kW station built in 2024, was financed by Scatec (€20,000) with €10,000 from the municipal budget. Serving 5,700 households, it secures water availability during the first hours of a power outage.



## Key results in 2025

**86,260**

euros invested in  
PV and battery  
stations



**33,450**

euros co-  
financed by local  
communities



**58,000**

people indirectly  
reached





## CASE STUDY: SOUTH AFRICA

# Measurable impact through locally owned value creation

### South Africa overview

We focus on compliant and strategic investments to meet our spend obligations and ensure long-term impact, with **71 ongoing programmes** in 2025. The Enterprise 4 Change programme empowers local entrepreneurs to drive inclusive economic growth.

### The challenge

In response to high unemployment, low economic activity and limited skills, the initiative aims to create jobs, improve livelihoods, and generate income by supporting young people to start sustainable, independent businesses, thereby creating employment and contributing to a stronger local economy.

### How we worked

We partnered with Angels Resources to deliver skills development through accredited trainings, mentorship, soft skill modules, and grant funding, thereby helping entrepreneurs access new markets, create jobs and generate sustainable turnover.





# Key results in 2025



**11**  
permanent jobs  
created



**24**  
part-time jobs  
created



**60%**  
Women-led  
businesses



**90%**  
youth  
entrepreneurs





## OUTLOOK: KEY TRENDS AND PRIORITIES FOR 2026

# Scaling successful programmes, expanding new funding opportunities and enhancing data-driven decision-making

### Community PV

Aligns local benefits with Scatec's core business and is measurable through cost savings and CO2 emissions avoided. Opportunity to use recycled panels from site. Currently implemented in **7 countries** and ensures local communities also benefit from clean energy, esp. if not connected to the grid.



### Trainings and capacity building

Supports local value creation through skills, employability and potential hiring pathways during construction. Opportunity to find synergies between investments and project requirements, as well as benefits in terms of capacity building & local hiring.





**Scatec**  
improving our future